

SOLD



107 Bates Rd, Federal



'Rainforest Resort' – The complete privacy package

Sold by Gary & Todd – At the end of a country lane, on an elevated ridgeline with a perfect northerly aspect and stunning hinterland views sits an architecturally designed, quality-built home.

A one-kilometre-long driveway meanders through its own private rainforest to reach the pavilion-style, five-bed home.

With generous living areas, soaring raked ceilings and rosewood timber floors, the light and bright property is set on 30 acres of rolling grass, rainforest and bush land – an ideal antidote to city life!

In the first pavilion a huge kitchen with a butler's pantry, and grand proportioned living/dining space with fireplace, overlooks a stunning infinity edge pool with

🏠 5 🌳 3 🚗 2 📄

12.09 ha

| | |
|----------------------|-------------|
| Price | SOLD |
| Property Type | Residential |
| Property ID | 1016 |
| Land Area | 12.09 ha |
| Floor Area | 360 m2 |

Agent Details

Gary Brazenor – 0423 777 237

Office Details

Brunswick Heads
3 Fawcett St Brunswick
Heads, NSW, 2483
Australia
02 6685 1754

expansive entertaining decks and hinterland views.

In the second is a generous master bedroom with luxury ensuite, two further spacious bedrooms and second bathroom.

Pavilion three includes two further bedrooms plus another bathroom along with a massive media room.

Downstairs there is a huge home office, double garage, laundry, shed and storage.

Features on offer here include:

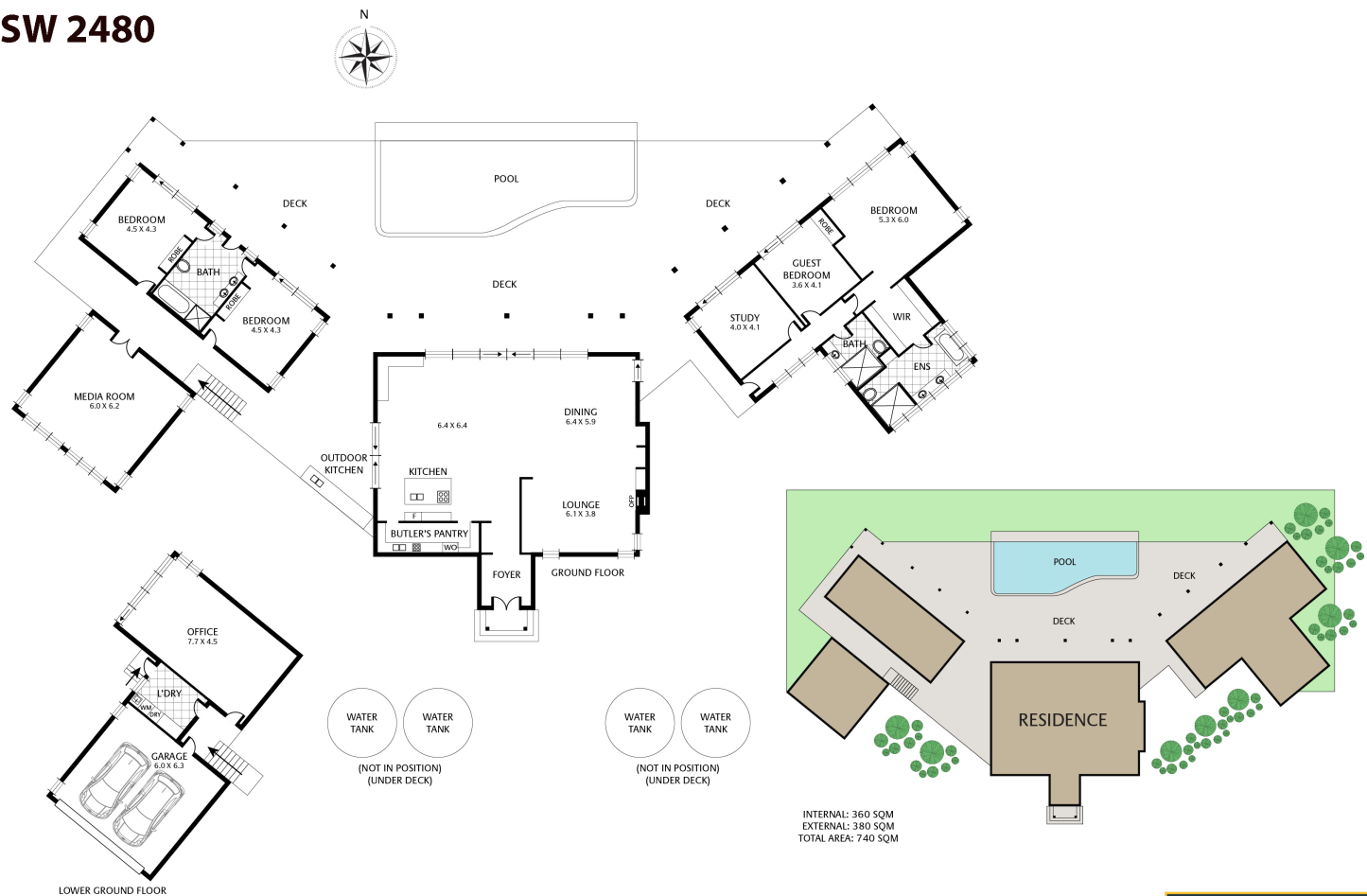
- Complete privacy and solitude, resort style facilities, elevation and stunning hinterland views
- Heated, 3m deep infinity edge pool, over 300m² of entertaining decks with BBQ area and café blinds
- Grand proportions with separate media room and huge home office, 5 spacious bedrooms all open onto the deck and 3 luxury bathrooms
- High quality build with a mix of timbers including oversized rosewood sliding doors and windows
- Granite kitchen benches, huge butler's pantry and plenty of storage
- Multi-functional pavilion floor plan with soaring ceilings and generous proportions throughout
- Double garage, tool shed, two workshops under house storage, plus raised veggie beds
- Abundance of water including a creek and 60,000 litres of filtered rainwater tanks
- Stunning entry along a 1 km bitumen driveway through private rainforest
- Landscaped gardens with stonework walls and established citrus, apple, fig, walnut and more!
- Just 5 minutes from Federal Store, 20 mins from Mullumbimby and under 30 mins from Byron Bay.
- Goonengerry primary is 5 mins away and school buses are available for high schools.

The only sounds here are of nature; flocks of birds taking flight the wind and rain and, in the distance, enjoy views

over to Minyon falls. It is rare to find this level of seclusion, privacy and quality in a property so be sure to call Gary Brazenor to arrange a viewing or digital inspection today.

The above information provided has been furnished to us by the vendor/s. We have not verified whether or not that information is accurate and do not have any belief in one way or the other in its accuracy. We do not accept any responsibility to any person for its accuracy and do no more than pass it on. All interested parties should make and rely upon their own inquiries in order to determine whether or not this information is in fact accurate.

107 Bates Rd Federal
NSW 2480



NOTE: Every precaution has been taken to verify the accuracy of the above details. However, prospective purchasers are advised to make their own enquiries.