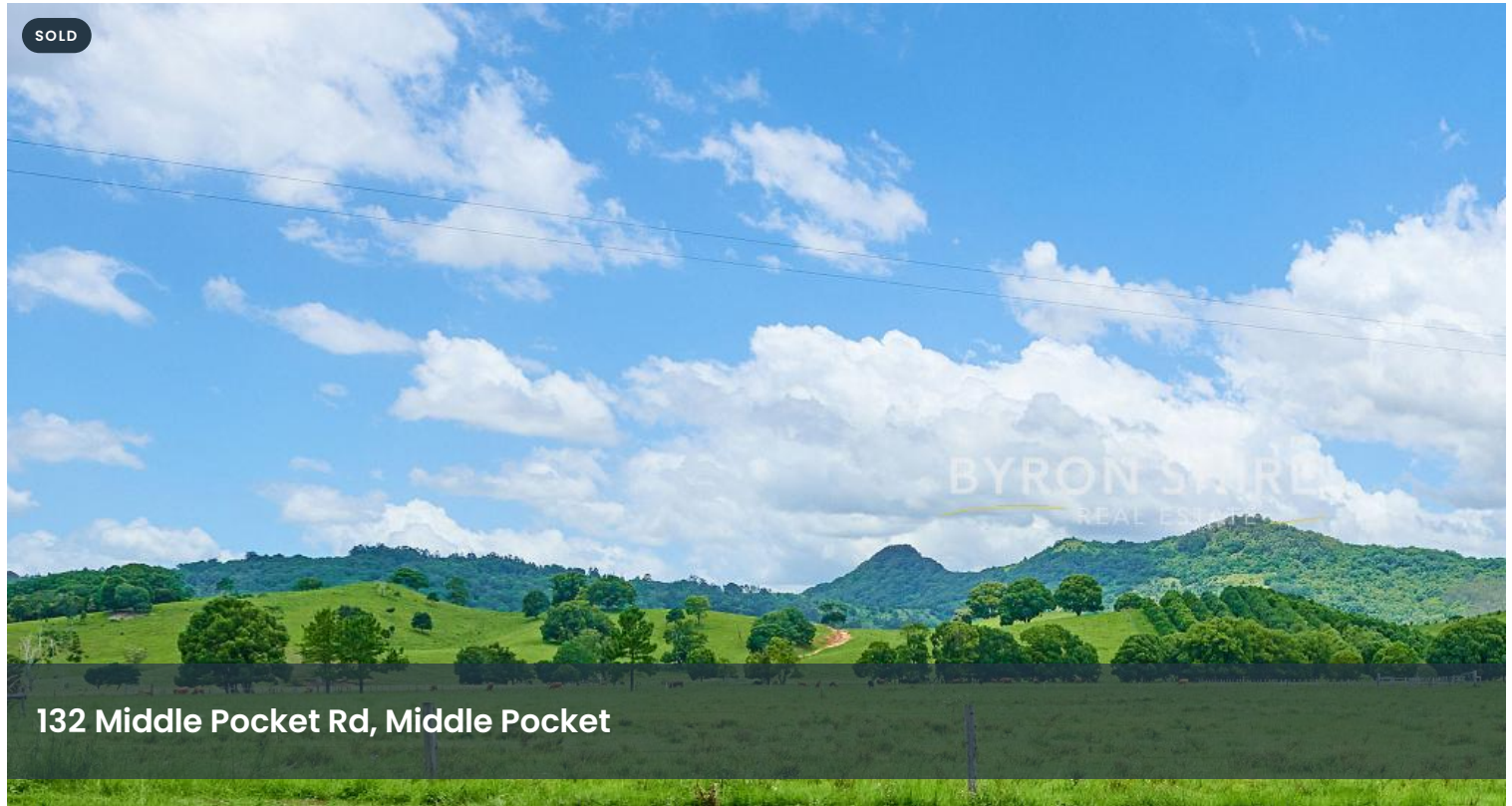


SOLD



132 Middle Pocket Rd, Middle Pocket



Idyllic 5 acres to build your dreamhome

Under offer by Gary & Todd Situated under 10 minutes from the coast along a quiet country road this stunning 5.4-acre level lot offers approximately 360m of meandering Lacks Creek frontage.

Previously run as a nursery the land is full of beautiful and exotic plants and tropical gardens along with mature tropical trees. The land is amazing, with vision and regeneration it would make a stunning lifestyle hobby farm.

Whether you're a renovator or looking to build your dream home this canvas is full of potential!

Features here include:

- 5.4 acres with meandering Lacks Creek frontage
- Exotic plants and gardens with mature tropical trees
- Weatherboard cottage with high ceilings and potential
- 10 mins from the beach and 5 mins from Billinudgel
- Timber floors, sash windows and a lovely outlook over the creek

🏠 3 🌳 2 🚗 1 📄

5.40 ac

Price	SOLD
Property Type	Residential
Property ID	1064
Land Area	5.40 ac
Floor Area	145.30 m2

Agent Details

Todd Buckland - 0408 966 421

Gary Brazenor - 0423 777 237

Office Details

Brunswick Heads
3 Fawcett St Brunswick Heads, NSW, 2483

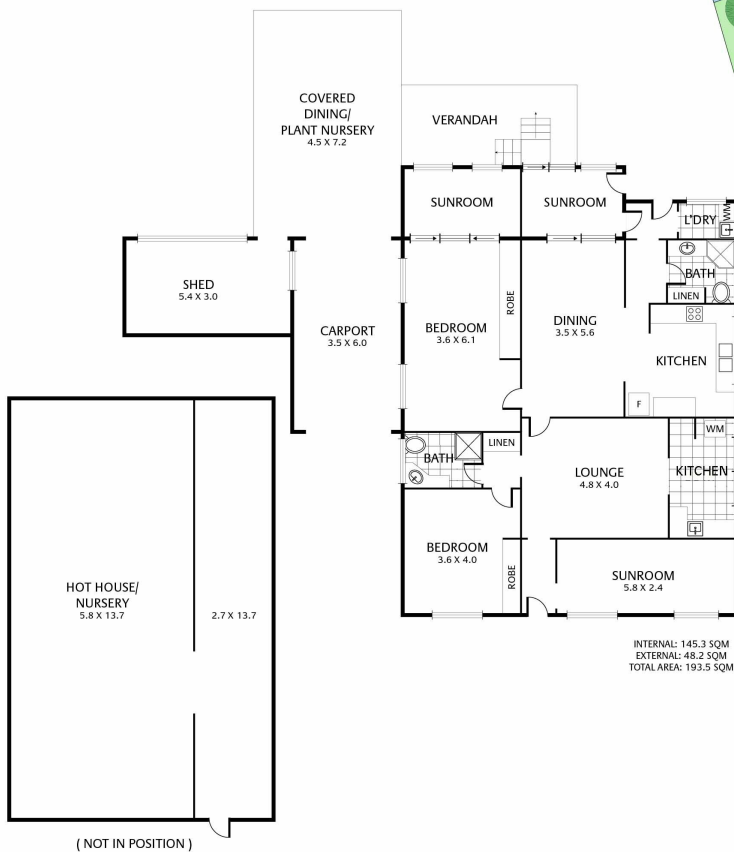
- Large potting shed, chicken run, room for horses - perfect for a hobby farm

Australia
02 6685 1754

If water security and proximity to the coast are important then be sure to view this awesome opportunity today!

The above information provided has been furnished to us by the vendor/s. We have not verified whether or not that information is accurate and do not have any belief in one way or the other in its accuracy. We do not accept any responsibility to any person for its accuracy and do no more than pass it on. All interested parties should make and rely upon their own inquiries in order to determine whether or not this information is in fact accurate.

132 Middle Pocket Rd, Middle Pocket



MIDDLE POCKET

NOTE: Every precaution has been taken to verify the accuracy of the above details. However, prospective purchasers are advised to make their own enquiries.

