

SOLD



21 Kingsford Drive, Brunswick Heads



## Attention Brunswick Heads Investors

This substantial family home will be sold with a guaranteed 18 month rental lease at market rent \$580-\$600 p/w.

Located in the tightly held Bayside Brunswick Heads, this property is a 15 minute stroll to the bustling village and it's amazing river, beaches & cafe.

The huge open plan living, dining, bar and kitchen opens onto a covered entertaining patio and kidney shaped in-ground pool. An outdoor bathroom services this space and an outside storage & laundry assists with keeping the beach sand out of the house! Beyond the back fence through the gate is a reserve with bike paths and adventures galore.

🚗 4 🏠 3 🚗 1 📏 714 m2

**Price** SOLD for  
\$652,000

**Property Type** Residential

**Property ID** 617

**Land Area** 714 m2

**Floor Area** 222 m2

### Agent Details

Todd Buckland - 0408  
966 421

### Office Details

Brunswick Heads  
3 Fawcett St Brunswick  
Heads, NSW, 2483  
Australia

The master bedroom has a WIR and a corner spa bathroom. 3 further bedrooms all have BIRs plus a family bathroom & indoor laundry. The double garage has been renovated with half converted into a home office with separate access and the other a single lock up garage. Book your inspection now.

*The above information provided has been furnished to us by the vendor/s. We have not verified whether or not that information is accurate and do not have any belief in one way or the other in its accuracy. We do not accept any responsibility to any person for its accuracy and do no more than pass it on. All interested parties should make and rely upon their own inquiries in order to determine whether or not this information is in fact accurate.*

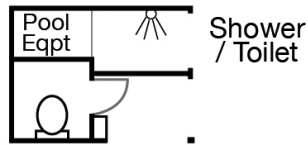
21 KINGSFORD DRIVE  
BRUNSWICK HEADS



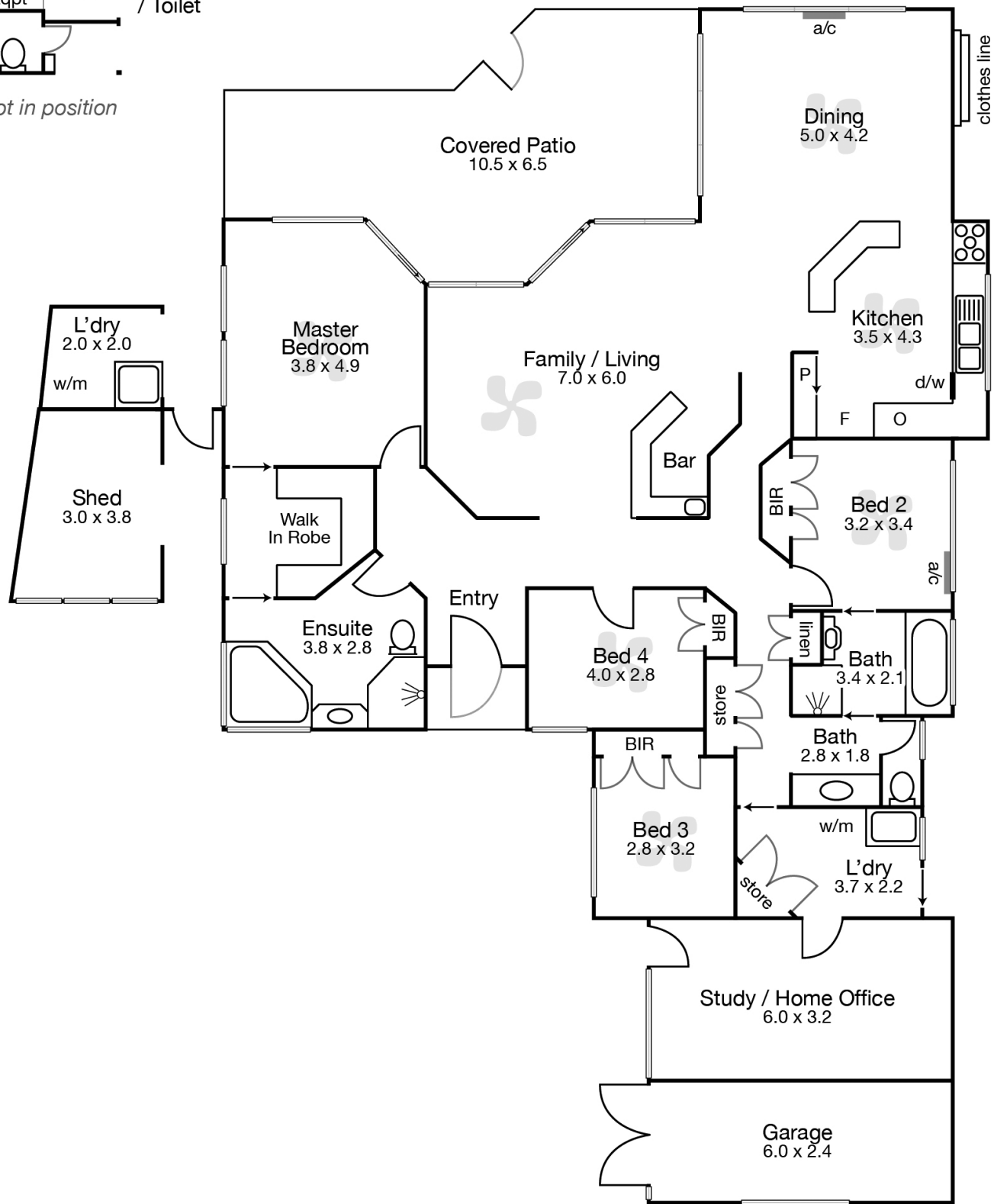
4 2.5 1

Residence Internal Area 185m<sup>2</sup>

Entertaining Patio 37m<sup>2</sup>



not in position



Floor plan indicative of building layout as illustration only. No liability accepted.  
All dimensions displayed in metres are approximate.

**BYRON SHIRE**  
REAL ESTATE