

SOLD



1 Riverside Crescent, Brunswick Heads



SOLD AT AUCTION

Situated on one of Brunswick Heads most beautiful and majestic locations, 1 Riverside Crescent is a classic 1960s bungalow set on the Brunswick River. This charming north facing home is the perfect family getaway overlooking the stunning river & hinterland and just an easy walk to the Brunswick Heads beaches and quaint town centre.

- Upper level open lounge and dining area bathed in sunshine overlooking the river
- Upper deck, cute front garden & spacious back garden perfect for entertaining
- Flexible lower level layout that's ideal for extended family, teens or guests
- Beautiful master bedroom with built ins and views
- Updated kitchen & bathroom with laundry facilities

🚗 2 🏠 2 🚗 2 📄

525 m2

Price SOLD for
\$732,000

Property Type Residential

Property ID 625

Land Area 525 m2

Floor Area 82 m2

Agent Details

Todd Buckland - 0408
966 421

Office Details

Brunswick Heads
3 Fawcett St Brunswick
Heads. NSW. 2483

- Double garage with room for boat or other watercraft
- Quiet fishing spots, boating and paddle boarding metres from door

The above information provided has been furnished to us by the vendor/s. We have not verified whether or not that information is accurate and do not have any belief in one way or the other in its accuracy. We do not accept any responsibility to any person for its accuracy and do no more than pass it on. All interested parties should make and rely upon their own inquiries in order to determine whether or not this information is in fact accurate.

10000, NSW, 2100

Australia

02 6685 1754

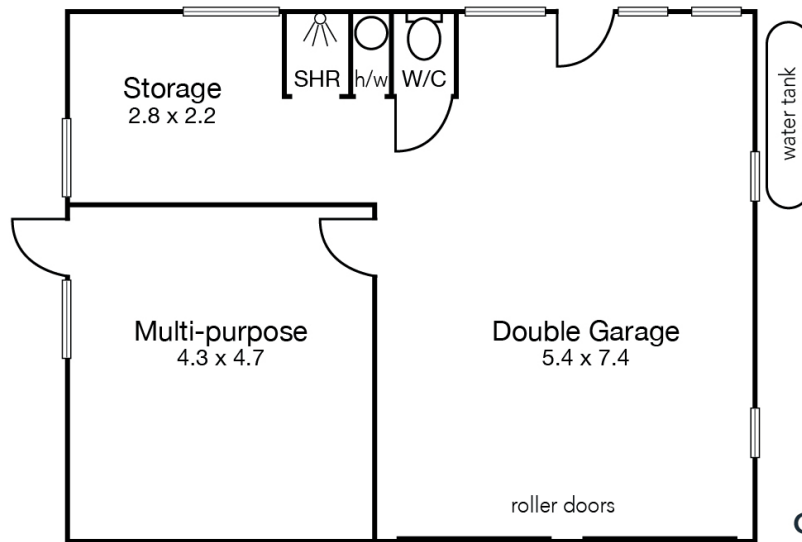
1 RIVERSIDE CRESCENT BRUNSWICK HEADS



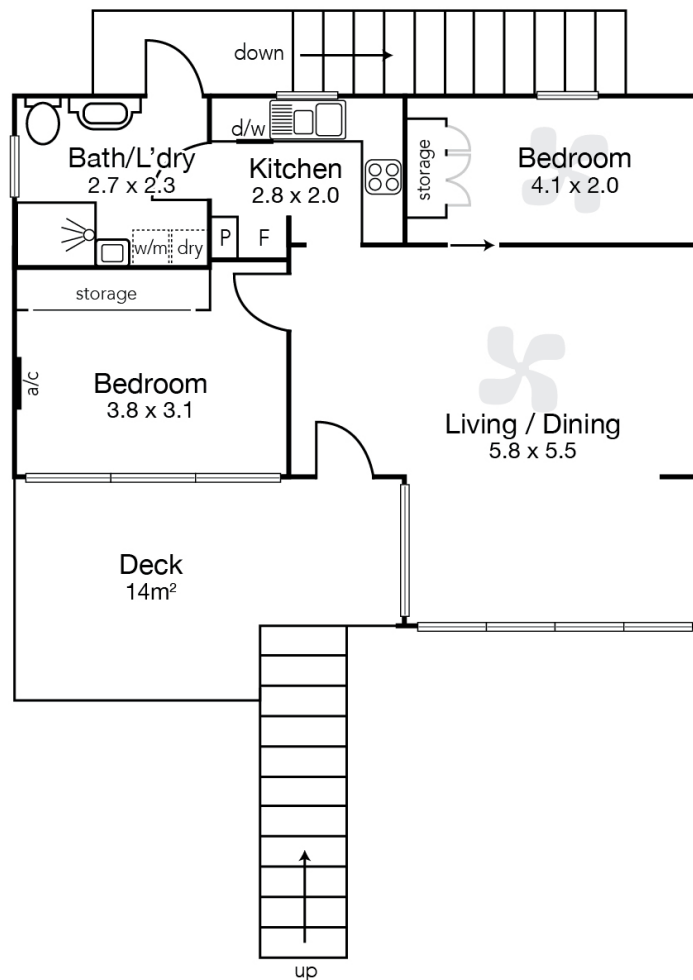
2 1 2

Ground Floor 46m²

First Floor 36m²



GROUND FLOOR



FIRST FLOOR

Floor plan indicative of building layout as illustration only. No liability accepted.
All dimensions displayed in metres are approximate.

BYRON SHIRE
REAL ESTATE