

SOLD



29 Tweed Street, Brunswick Heads



High-Set Cottage

Like to invest & gain return in Brunswick Heads?

This two story renovated home allows just that potential.

It has a flexible floor plan with two separate entries and facilities. Upstairs entry opens to a white washed walls & polished floor boards, and an open plan living, dining and updated kitchen. Off the kitchen is an east facing balcony, perfect for enjoying a sunny breakfast. One bedroom has built in robes, the other adjoins the balcony. There is a north facing corner study or sun room and a fully renovated bathroom.

Downstairs has a large open plan multi-purpose room with kitchenette facilities. There's a storage room with roller door access to the front, three separate bright

🚗 2 🏠 2 🚗 1

Price SOLD for
\$742,500

Property Type Residential

Property ID 628

Floor Area 180 m2

Agent Details

Todd Buckland - 0408
966 421

Office Details

Brunswick Heads
3 Fawcett St Brunswick
Heads, NSW, 2483
Australia
02 6685 1754

rooms and a second bathroom with a laundry. All this with access to a leafy backyard and covered entertaining area.

This home is situated on a private block in central Brunswick Heads.

The above information provided has been furnished to us by the vendor/s. We have not verified whether or not that information is accurate and do not have any belief in one way or the other in its accuracy. We do not accept any responsibility to any person for its accuracy and do no more than pass it on. All interested parties should make and rely upon their own inquiries in order to determine whether or not this information is in fact accurate.

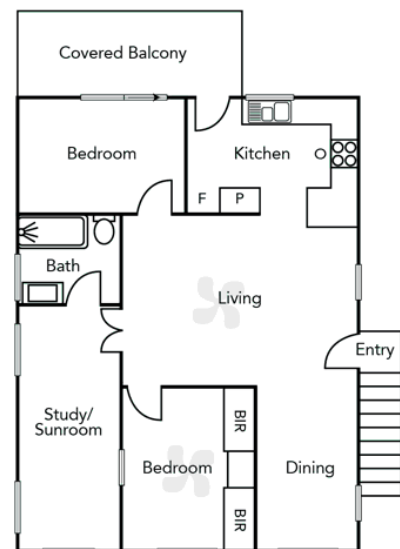
29 TWEED STREET
BRUNSWICK HEADS



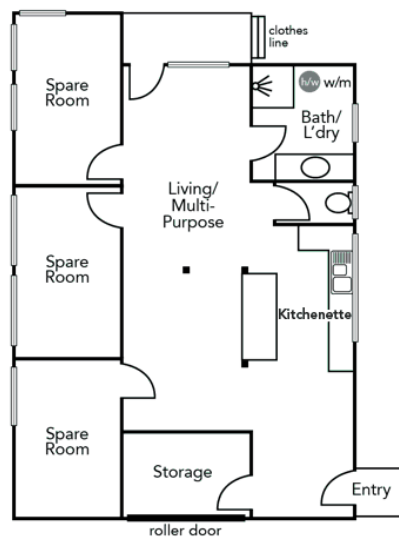
Upstairs Internal 82m²
Downstairs Internal 87m²
Total (inc. balcony) 180m²
Total Area 260m²

2+  2 

UPSTAIRS



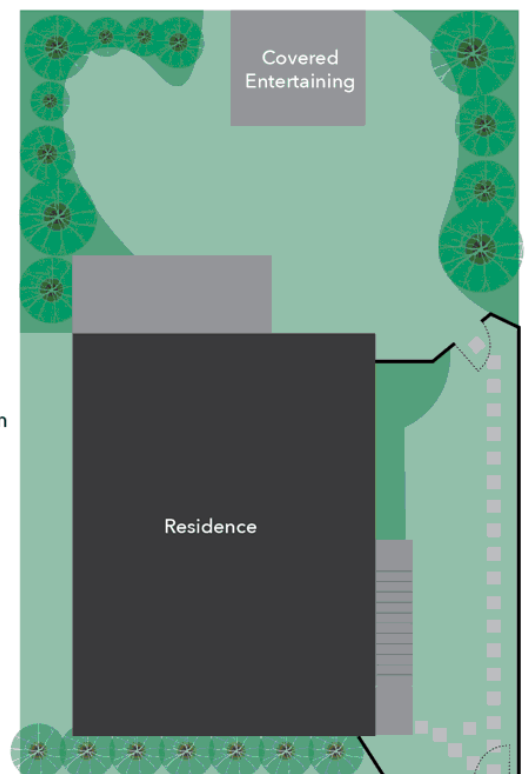
DOWNSTAIRS



SITE PLAN

13m

20m



Site plan indicative of building & landscaping layout as illustration only. No liability accepted.
All dimensions displayed in metres are approximate.

BYRON SHIRE
REAL ESTATE