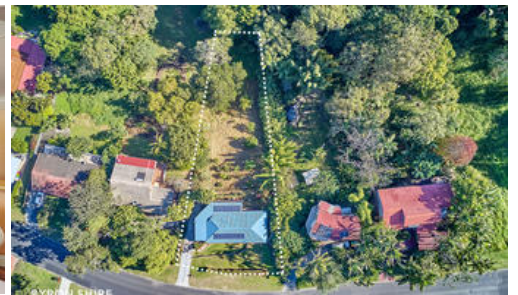




**15 Warrambool Rd, Ocean Shores**



## Sweeping Hinterland Views

This elevated home offers the best of both worlds. An open plan living, dining and kitchen area, 4 bedrooms and a large wrap around veranda with sweeping views to the Brunswick River and Mullumbimby hinterland. Big enough for a family, it also includes a separate fully equipped accommodation underneath the house for friends or guests.

Polished floorboards throughout, cosy carpet in the bedrooms, ceilings fans, air-conditioning, built in wardrobes, stainless steel Bosch pyrolitic oven and dishwasher: all these features added together make this home comfortable as well as practical.

The separate living area downstairs brings income potential. Comprising of one bedroom, bathroom, living area and kitchenette.

A brand new 350 litre hotwater system has just been installed and the huge 4.2 kw solar system will help to keep the power bills down.

Finally, the huge 1853 sqm block lends itself to further development. (STCA) Mature plantings and a wide range of fruit trees cover the grounds.

The above information provided has been furnished to us by the vendor/s. We have not verified whether or not that information is accurate and do not have any belief in one way or the other in its accuracy. We do not accept any responsibility to any person for its accuracy and do no more than pass it on. All interested parties should make and rely upon their own inquiries in order to determine whether or not this information is in fact accurate.

 4  3  2

**Price** \$770,000 to \$820,000  
NEW PRICE

**Property Type** residential

**Property ID** 769

**Land Area** 1,853 m<sup>2</sup>

**Floor Area** 181 m<sup>2</sup>

### Agent Details

Todd Buckland - 0408 966 421

### Office Details

Brunswick Heads  
Cnr Tweed & Fawcett Streets  
Brunswick Heads NSW 2483 Australia  
02 6685 1754

