

SOLD

23 Matong Dr, Ocean Shores



## Great Home, Leafy Street

Well positioned on an elevated corner block with two street frontages, there is plenty of space boat or caravan storage. Inside the home you will find an open plan layout, a large, bright family living area, dining room and kitchen. The spacious laundry is through the kitchen with rear access to the yard.

A covered timber deck is accessed from the dining and living rooms, with plenty of space for both dining and entertaining areas. Privacy from neighbours is provided by mature trees and gardens.

Built over two levels, the sleeping and living are separated by a few stairs. The master bedroom has polished timber floors, a built-in wardrobe and an updated ensuite. The other two bedrooms have polished timber floors with built in robes. The family bathroom has

3 2 2

753 m2

**Price** SOLD for  
\$910,000

**Property Type** Residential

**Property ID** 991

**Land Area** 753 m2

**Floor Area** 135 m2

### Agent Details

Todd Buckland - 0408  
966 421

### Office Details

Brunswick Heads  
3 Fawcett St Brunswick  
Heads NSW 2420

a large corner bath with shower and toilet.

Internal entry to the double garage is useful in inclement weather to unload the shopping or kids from the car and the concrete driveways bring off street parking for four cars. The multi-level layout also open the possibilities for separate accommodation or work from home space.

With mountain range glimpses and breezes from the elevated position, this property makes good buying for invertors or a family looking for their new home to love.

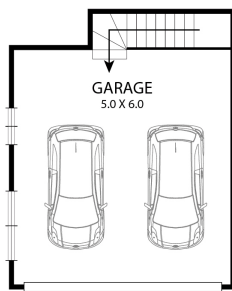
*The above information provided has been furnished to us by the vendor/s. We have not verified whether or not that information is accurate and do not have any belief in one way or the other in its accuracy. We do not accept any responsibility to any person for its accuracy and do no more than pass it on. All interested parties should make and rely upon their own inquiries in order to determine whether or not this information is in fact accurate.*

Heads, NSW, 2483

Australia

02 6685 1754

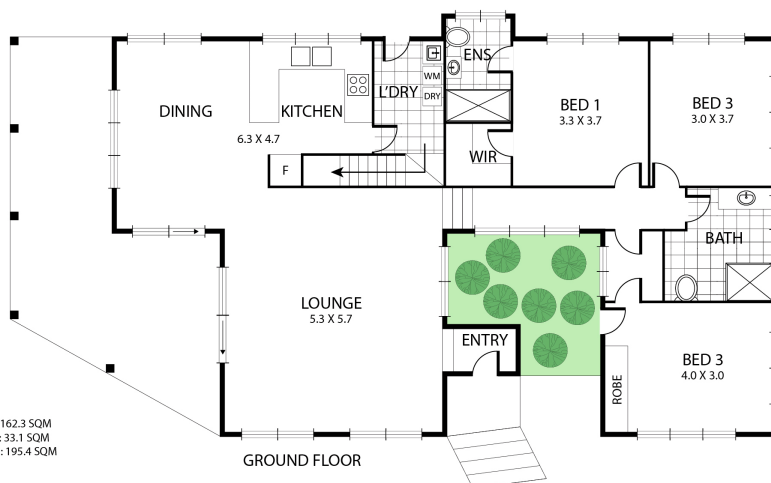
23 Matong Dr,  
Ocean Shores NSW



LOWER GROUND FLOOR



MATONG DR



INTERNAL: 162.3 SQM  
EXTERNAL: 33.1 SQM  
TOTAL AREA: 195.4 SQM

NOTE: Every precaution has been taken to verify the accuracy of the above details. However, prospective purchasers are advised to make their own enquiries.

**BYRON SHIRE**  
REAL ESTATE